

# **Sedgwick County Conservation District Annual Work Plan**



**11832 West Central, Suite 100  
Wichita, KS 67212  
(316) 721-6127**

## **Contents**

District Information.....	3
Staff and Personnel .....	3
Conservation District Mission Statement.....	4
Meeting Calendar .....	4
Land Cover – Land Use Inventory .....	5
Water Resources Inventory .....	8
Natural Resource Strategy and Goals .....	14
Outreach and Education Goals .....	20
Signature Statement.....	21

## District Information

**Title:** Sedgwick Annual Work Plan

**Name:** Sedgwick

**Address:** 11832 West Central, Suite 100

**Telephone Number:** (316) 721-6127

**Start Date:** 01/01/2026

**End Date:** 12/31/2026

## Staff and Personnel

First Name	Last Name	Title/Position	Capacity
Brenda	Matson	District Personnel	District Manager
Emilie	Terhune	District Personnel	DOC Technician
Kevin	Arnet	NRCS Personnel	SDC
Kimberly	Nijoka	NRCS Personnel	Other
Krista	Ward	Other Staff	Pheasants Forever
Steve	Hermann	Elected Supervisors	Chairperson
Greg	Winterscheidt	Elected Supervisors	Vice Chairperson
Virgil	Hill	Elected Supervisors	Treasurer
Larry	Kincheloe	Elected Supervisors	Member
Doug	Kohls	Elected Supervisors	Member
Mike	Wallace	NRCS Personnel	Soil Conversation Technician
Susan	Erlenwein		
Abby	Sroufe		
Terry	Kohler		

## Conservation District Mission Statement

### Conservation District Mission Statement:

The Kansas Conservation Commission, working through the Division of Conservation (DOC) of the Kansas Department of Agriculture, manages programs aimed at addressing natural resource concerns within the state. These programs are guided by the Commission's objectives, which include improving soil health and reducing erosion, conserving groundwater, protecting water supplies and reservoirs, reducing agricultural runoff, mitigating flood damage, improving wetlands and riparian areas, and enhancing wildlife habitat.

It is the mission of the Sedgwick County Conservation District to "Develop and implement programs to protect and conserve soil, water, farmland, rangeland, woodland, wildlife, riparian, and wetland resources."

## Meeting Calendar

Event Title	Date
State Cost-Share Sign-Up Begins	01/01/2026
Monthly Meeting	01/13/2026
Monthly Meeting	02/10/2026
Annual Meeting	02/17/2026
Monthly Meeting	03/10/2026
Monthly Meeting	04/14/2026
Stewardship Week	04/26/2026
Monthly Meeting	05/12/2026
Monthly Meeting	06/09/2026
State Fiscal Year begins, cost-share contracts submitted for approval	07/01/2026
Monthly Meeting	07/14/2026

Monthly Meeting	08/11/2026
District Annual Work Plan 2027 Due	09/01/2026
District Annual Budget 2027 Due	09/01/2026
Monthly Meeting	09/08/2026
Monthly Meeting	10/13/2026
Monthly Meeting	11/10/2026
Monthly Meeting	12/08/2026

## **Land Cover – Land Use Inventory**

**Describe the land cover in your district. Use maps, description or tables to describe native ecosystem.**

Sedgwick County is at the forefront of a host of environmental and conservation issues. With a population estimate of 525,525 (U.S. Census Bureau, July 1, 2022) the county is home to the largest city in Kansas (Wichita, pop. 396,192) and is still a strong agricultural producing county within the state.

The dual nature of the county results in the difficult task of balancing the interests of urban dwellers and rural/agricultural operators and producers. Increased development in rural areas is taking farmland out of production in addition to increasing the burden on other natural resources. According to the 2022 Census of Agriculture, there was a 4% decrease in the acres farmed and a 6% decrease in the number of farms between 2017 and 2022. The urban population continues to grow at a fast pace creating potential environmental problems. As the population in the county continues to increase, so do the burdens on our natural resources.



## Sedgwick County Kansas

### Total and Per Farm Overview, 2022 and change since 2017

	2022	% change since 2017
Number of farms	1,283	-6
Land in farms (acres)	474,946	-4
Average size of farm (acres)	370	+1
<b>Total</b>	<b>(\$)</b>	
Market value of products sold	175,058,000	+47
Government payments	3,424,000	-53
Farm-related income	15,051,000	+120
Total farm production expenses	151,936,000	+41
Net cash farm income	41,596,000	+64
<b>Per farm average</b>	<b>(\$)</b>	
Market value of products sold	136,444	+56
Government payments <sup>a</sup>	8,986	-12
Farm-related income <sup>a</sup>	24,198	+157
Total farm production expenses	118,423	+50
Net cash farm income	32,421	+74

### 1 Percent of state agriculture sales

#### Share of Sales by Type (%)

Crops	82
Livestock, poultry, and products	18

#### Land in Farms by Use (acres)

Cropland	390,720
Pastureland	56,130
Woodland	3,379
Other	24,717

#### Acres irrigated: 41,050

9% of land in farms

#### Land Use Practices (% of farms)

No till	25
Reduced till	16
Intensive till	29
Cover crop	5

#### Farms by Value of Sales

	Number	Percent of Total <sup>b</sup>
Less than \$2,500	357	28
\$2,500 to \$4,999	141	11
\$5,000 to \$9,999	112	9
\$10,000 to \$24,999	185	14
\$25,000 to \$49,999	114	9
\$50,000 to \$99,999	96	7
\$100,000 or more	278	22

#### Farms by Size

	Number	Percent of Total <sup>b</sup>
1 to 9 acres	133	10
10 to 49 acres	393	31
50 to 179 acres	350	27
180 to 499 acres	187	15
500 to 999 acres	96	7
1,000+ acres	124	10



Describe the land cover in your district. Use maps, description or tables to describe the

current agricultural production system.

Market Value of Agricultural Products Sold

	Sales (\$1,000)	Rank in State <sup>c</sup>	Counties Producing Item	Rank in U.S. <sup>c</sup>	Counties Producing Item
<b>Total</b>	<b>175,058</b>	<b>42</b>	<b>105</b>	<b>945</b>	<b>3,078</b>
<b>Crops</b>	<b>144,026</b>	<b>13</b>	<b>105</b>	<b>581</b>	<b>3,074</b>
Grains, oilseeds, dry beans, dry peas	125,091	20	105	498	2,917
Tobacco	-	-	-	-	267
Cotton and cottonseed	2,971	9	25	351	647
Vegetables, melons, potatoes, sweet potatoes	387	14	75	1,210	2,831
Fruits, tree nuts, berries	362	6	56	1,017	2,711
Nursery, greenhouse, floriculture, sod	8,168	3	71	352	2,660
Cultivated Christmas trees, short rotation woody crops	288	1	13	168	1,274
Other crops and hay	6,760	14	105	514	3,035
<b>Livestock, poultry, and products</b>	<b>31,031</b>	<b>73</b>	<b>105</b>	<b>1,456</b>	<b>3,076</b>
Poultry and eggs	(D)	26	102	(D)	3,027
Cattle and calves	22,137	80	105	782	3,047
Milk from cows	6,883	20	57	530	1,770
Hogs and pigs	(U)	(U)	95	(U)	2,814
Sheep, goats, wool, mohair, milk	362	19	101	549	2,967
Horses, ponies, mules, burros, donkeys	465	8	99	615	2,907
Aquaculture	-	-	14	-	1,190
Other animals and animal products	211	13	90	688	2,909

Producers <sup>d</sup>	2,258	Percent of farms that:	Top Crops in Acres <sup>e</sup>
<b>Sex</b>		Have internet access	80
Male	1,540		
Female	718		
<b>Age</b>		Farm organically	(Z)
<35	187		
35 – 64	1,214		
65 and older	857		
<b>Race</b>		Sell directly to consumers	7
American Indian/Alaska Native	6		
Asian	4		
Black or African American	17		
Native Hawaiian/Pacific Islander	-		
White	2,223	Hire farm labor	23
More than one race	8		
<b>Other characteristics</b>		Are family farms	93
Hispanic, Latino, Spanish origin	29		
With military service	149		
New and beginning farmers	682		
			<b>Livestock Inventory (Dec 31, 2022)</b>
			Broilers and other meat-type chickens
			490
			Cattle and calves
			33,497
			Goats
			837
			Hogs and pigs
			259
			Horses and ponies
			1,139
			Layers
			2,518
			Pullets
			319
			Sheep and lambs
			1,717
			Turkeys
			25

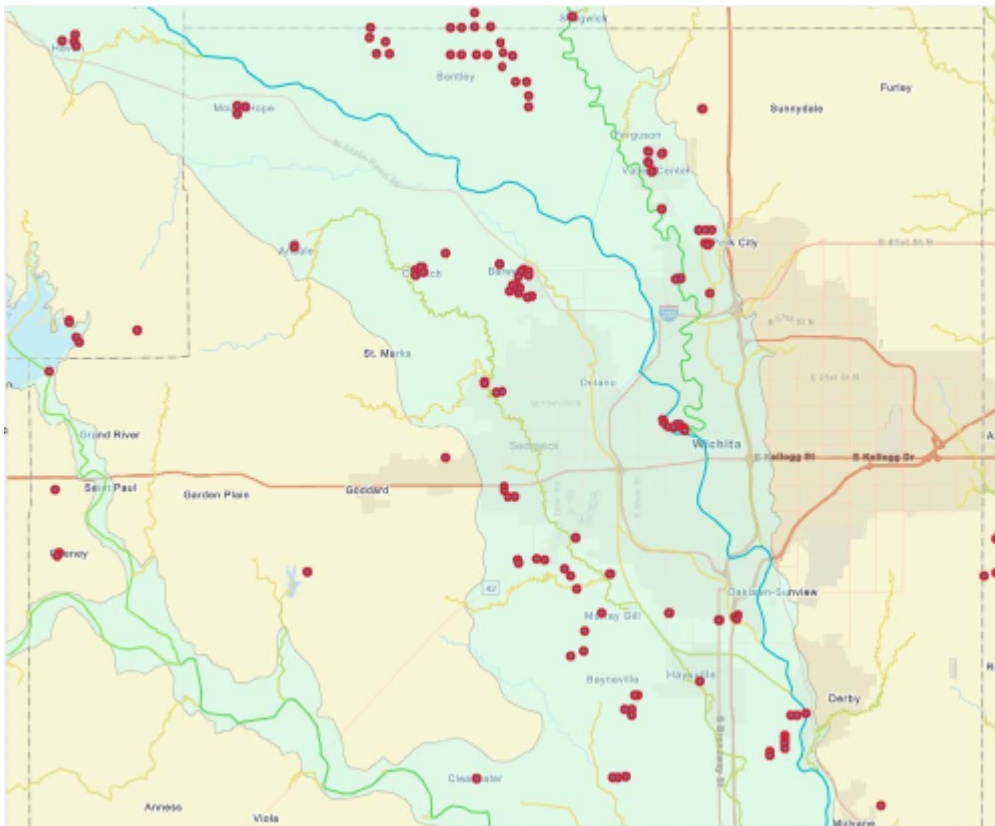
<sup>a</sup> Average per farm receiving. <sup>b</sup> May not add to 100% due to rounding. <sup>c</sup> Among counties whose rank can be displayed. <sup>d</sup> Data collected for a maximum of four producers per farm. <sup>e</sup> Crop commodity names may be shortened; see full names at [www.nass.usda.gov/go/croonames.pdt](http://www.nass.usda.gov/go/croonames.pdt). <sup>f</sup> Position below the line does not indicate rank. (D) Withheld to avoid disclosing data for individual operations. (INA) Not available. (Z) Less than half of the unit shown. (-) Represents zero.

## Water Resources Inventory

**Water Resources Inventory. List all major water bodies, rivers, streams and public water supplies in your district. You may use maps, description and/or tables.**

The Kansas Department of Health and Environment (KDHE) established Total Maximum Daily Loads (TMDL's) for the Lower Arkansas River Basin. Pursuant to this process approximately 60% of Sedgwick County is designated as 'high priority' for the following contaminants: eutrophication; fecal coliform bacteria; nutrients and siltation.

The water bodies identified are the Big Arkansas River, the Little Arkansas River, Dry Creek, Cowskin Creek, the Big Slough, and Lake Afton. Several other streams and lakes have been identified as medium priority. Additionally, the Ninnescah River, which drains a portion of the southwest part of the county, is subject to tremendous erosion problems. In some instances, more than a quarter mile of riverbank has been washed away. The rains in the spring and summer of 2019 exacerbated these problems.



## Legend

Public Water Supply



Strahler Stream Order (3-9)

3

4

5

6

7

8

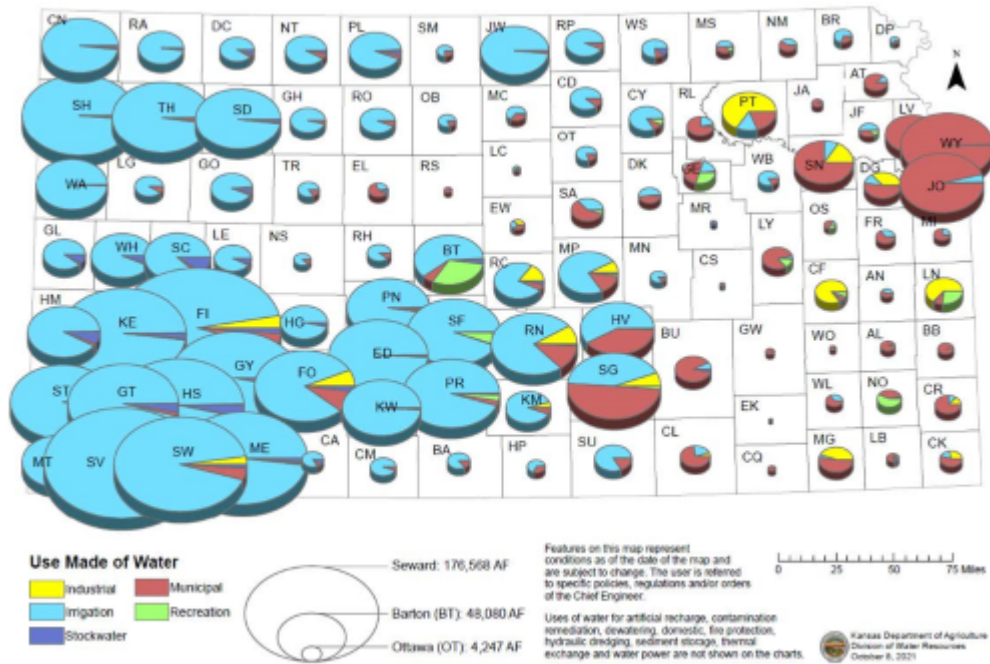
9

TMDL Streams



**Water Resources Inventory. Who are the primary water users in your district? You may use maps, description and tables to identify.**

2020 Reported Water Use for Kansas Counties



**Land and Water Resource:**

Using the resources listed below and others (if applicable), summarize the goals of the following groups/organizations as they relate to your district. These summaries will be used later to develop goals for your district.

- a. RAC Goals for your region
- b. Nonpoint Source Management Plan for your district
- c. Local Work Group identified concerns
- d. WRAPS 9-element plan
- e. Other resources such as, but not limited to, Forestry Action Plan, Wildlife Action Plan

**a. Equus-Walnut RAC Goals**

Priority Goal #1: Promote sustainable balance of groundwater withdrawals with annual recharge in the Equus Beds Aquifer. Ensure safe yield and recharge rate calculations in the Equus Beds Aquifer are accurate through a district wide, integrated groundwater and surface water model.

Priority Goal #2: Encourage the development and use of comprehensive water supply plans by

major water users in the region. Plans should account for long-term supply and demand, vulnerabilities within a water supply system, and potential for improved water efficiency.

Priority Goal #3: Implement watershed protection measures to improve the reliability and health of surface water resources in the region.

Priority Goal #4: Allocate necessary resources to accurately locate, characterize, prioritize and remediate contamination sites within the Equus-Beds Aquifer.

Priority Goal #5: Increase efforts to establish sustainable, water-conserving agricultural production practices.

## **b. Nonpoint Source Management Plan**

The ranking criteria were established to improve and protect the quality/quantity of water in Sedgwick County. Priority is given to targeted watershed areas above public water sources, soil saved, and proximity to receiving water body.

## **c. Local Work Group**

### **Water Quality/Quantity Resource Concerns:**

- concern with nitrate levels in water
- concern with atrazine levels in surface waters. Atrazine is addressed in Little Ark WRAPs. Label restrictions may drive changes.
- concern with livestock access to streams
- concern with Water System access for livestock – need to plan for “Drought Resiliency”.
- concern to provide a secondary water source – currently only incentivized by WRAPS
- concern with quality of water in HOA ponds in housing development areas. Need access points just like livestock ponds.
- concern with population levels of resident geese populations that affect water quality in HOA ponds.
- concern with cool-season grass species used in yards that require fertilization and irrigation

- concern with trash (washer, refrigerators, junk, trash) disposal by individual landowners in pits, holes, low areas.
- concern with the amount of streambank erosion that is occurring in the urban setting
- concern about pivots going across blue line streams
- concern that water is not a priority resource concern for federal programs

### **Cropland Resource Concerns:**

- soil health is a priority resource concern
- need for expansion of no-till/soil health practices...additional educational efforts needed
- drought has had a negative impact on cropland/grassland causing less cover leading to challenges with erosion, pest control, plant vigor, OM, potentially more siltation in existing structural practices (grassed waterways, terraces) and additional sediment delivery to surface waters
- concern that it's difficult to justify the implementation of cover crops unless they're grazed or other factors
- concern that producers are not able to fit two cover crops in a five-year period for EQIP
- concern that there is not time to get cover crops within a crop rotation. Possible to use state cost share to fit in a cover crop (wheat->beans->corn)
- there has to be an economic return benefit to justify application of cover crops
- concern that benefits from cover crops takes years to realize...perception there is a general apprehension to commit to the time frame needed to realize benefits...associated with farm economics and economics of surviving on a year-to-year basis
- concern there are varying opinions among producers, and some professionals, whether cover crops save moisture or deplete moisture
- concern...seeing "opportunistic" no-till...utilizing no-till in certain situations, not necessarily seeing an increase in "continuous" no-till.
- concern with challenges controlling chemical resistant weeds...may be a discouragement to expansion of no-till.
- concern that erosion control can't adequately be treated with only management practices...takes a combination of management and structural conservation practices.
- concern with active gully erosion (ephemeral) in cropland fields...worked shut every year, but reform annually

- concern that existing ephemeral erosion areas in cropland are not being adequately treated and continuing to worsen to the point they're transitioning to classic gully erosion
- concern with erosion occurring on NHEL cropland.
- concern with replacing/maintaining structural conservation practices that have outlived their lifespan...erosion is occurring in unmaintained structural practice systems (waterways, terraces)...especially as higher intensity rainfall events occur
- concern there is a need for soil sampling education/interpretation/implementation on cropland and grassland
- concern with lack of crop rotation diversity
- concern with continuous wheat in parts of the MU (central – western edge).
- concern crops are grown with no rotation...no residue... no wildlife values
- concern that institutional policies...primarily crop insurance...inhibit “alternative” crop adoption
- concern with lack of/proximity of alternative crop markets to support alternative crop production.
- loss of ag land to urban sprawl and land purchased for hunting only
- concern with chemicals used for pest control. More interest in technology to reduce chemicals needed for pest control.

#### **Grazing Lands Resource Concerns:**

- loss of ag land to urban sprawl and land purchased for hunting only
- concern with declining grassland health from overgrazing and lack of proper grazing management is reducing health and vigor of grasslands and increasing invasives and noxious weed infestations.
- concern with encroachment of invasive species: phragmites, johnsongrass, old world bluestem, sericea lespedeza, cedars/hedge woody species, elm trees
- concern with cedar tree encroachment...causes diminished grass vigor, has negative impact on available water resources, reduces quality of wildlife habitat
- concern with a general complacency about tree control...we'll get to it when we can...by then the tree growth has almost become unmanageable...and economically unfeasible to address

- concern that prescribed burning is not implemented as it has been in the past due to changing environmental conditions, increased fuel loads (cedars), air quality, and fear of potential non-desirable outcomes (i.e., out of control fires, litigation, etc.). Sumner County might be able to host an ‘after effects’ field day to promote prescribed burns.
- concern with the lack of available resources available to producers to support prescribed burning (burn associations & districts/groups, rural/municipal fire departments)
- concern with Water System access for livestock – need to plan for “Drought Resiliency”.
- concern with lack of water drillers in local area

#### **d. WRAPS 9-element plan**

Directly addressing High Priority TMDLs for:

- Bacteria – Cowskin Creek
- Biology – Cowskin Creek

Positively affected impairments include:

- Arkansas River – Bacteria (High Priority)
- Arkansas River – Biology (Medium Priority)

Additionally, the River City WRAPS is addressing stream quality degradation issues in Gypsum Creek

#### **e. NRCS - KS Conservation Priorities**

Grassland  
Water  
Healthy Soils

## **Natural Resource Strategy and Goals**

**Enter overall district water resource concerns in priority order.**

### **1. WATER QUALITY**

- a. Reduce the discharge of potential pollutants and dissolved solids with highest priority directed to those posing the greatest threat to human health and safety.

- b. Minimize pollution caused by organic waste from agricultural production.
  - c. Reduce the nutrients reaching the water from agricultural runoff in accordance with TMDL's developed by the Kansas Department of Health and Environment.
  - d. Achieve sediment reduction goals set forth in the Agricultural Runoff Water Quality Management Plan and in accordance with TMDL standards developed by KDHE.
2. WATER SUPPLY AND CONSERVATION
- a. Increase the efficiency of water use in agriculture.
3. FISH AND WILDLIFE HABITAT
- a. Improve upland habitat on both cropland and non-cultivated land.
  - b. Improve the quality of fish habitat.

**Enter overall district land resource concerns in priority order.**

1. EROSION
- a. Reduce erosion to the acceptable level on agriculture land that has a soil loss exceeding the allowable rate.
  - b. Maintain soil quality regarding tilth, infiltration capacity, organic matter, and compaction.
2. URBAN AND BUILT-UP AREAS
- a. Provide information to help urban developers and other land users overcome resource limitations.
  - b. Reduce the conversion of prime and unique farmlands and wetlands to urban areas.
  - c. Reduce sediment delivery from construction sites.

**List district goals and strategies to address the water and land resource concerns in your district.**

**You may also list goals to address wildlife concerns if applicable. Consider best management practices to address the goals and strategies.**

The following have been identified as major concerns and high priority items at the local level:

1. Identification and development of programs to protect environmentally sensitive areas within Sedgwick County
  - Agricultural land
  - Wetlands
  - Riparian corridors
  - Water supply sources (surface and groundwater)
  - Sand pits
  - Floodplain
2. Maintaining a viable agricultural economy through partnerships between rural/agriculture and urban areas
3. Public education and awareness programs

Based on these priorities identified at the local level, the Sedgwick County Conservation District's goals and objectives for fiscal year 2026 are as follows. Please note order does not reflect priority.

1. Implementation of conservation practices designed to protect and enhance wetland and riparian areas
2. Protection of agriculture land from erosion (water and wind)
3. Protection of surface water from urban and rural contaminants (TMDL)
4. Protection of groundwater from contaminants
5. Implementation of water quality protection measures in TMDL impaired Hydrologic Units (HUC's)
6. Development of methodology to 'target' funds to high priority HUC's
7. Identification of high-risk watershed or hydrological units
8. Increase awareness of best management and water quality protection measures
9. Development of water quality protection measures demonstration projects
10. Increase cooperation between federal, state, and local governmental agencies
11. Educate the public about Nonpoint Source Pollution
12. Educate the public concerning water quality protection measures

13. Educate the public about soil health
14. Educate the public about resource conservation
15. Educate the public about Farm Bill Conservation Programs

**Strategy:** The most important strategic development at the Sedgwick County Conservation District is the methodology we are using to target funds and enroll participants in cost-share programs. We have concluded that the best way to reach landowners is via NRCS referrals, contractor referrals, City staff referrals, Facebook, website, e-newsletter, partner organization newsletters/events, and presentations at community events.

In developing strategies to meet the objectives identified in the preceding section, particular attention will be devoted to strategies that assist in meeting more than one objective. The following strategies will be used to meet the objectives identified above.

1.
  1. Partnership With NRCS
    - a. Execution of the Local Operating Agreement
    - b. Partnership with NRCS will assist in meeting all District goals and objectives
  2. Memorandum of Understanding - Sedgwick County Commissioners
    - a. MOU between the Conservation District and the County Commissioners
    - b. Sets forth relationship duties/responsibilities
    - c. Will assist in meeting all goals/objectives
  3. State Water Resources Cost Share Program
    - a. Administration of cost share funds **GOAL: Cost Share Utilization % of over 90% of allocation.**
    - b. Partnership with NRCS -
      - Technical Assistance
      - Equipment

- c. Marketing program - sign-up
  - d. Development of prioritization method **GOAL: For FY2027, Ranking Worksheet will be optimized to comply with DOC Programs Manual, 'Targeting & Prioritizing'**
  - e. Implementation of best management practices
  - f. Measurement/Evaluation
    - Save 50,000 tons of topsoil
    - Plan Best Management practices on 5,000 acres
    - Apply Best Management Practices on 5,000 acres
  - g. Objective #'s 2 - 7, 13, 14
4. United States Department of Agriculture (USDA) Programs
- a. NRCS administration of programs
  - b. Partnership With SCCD -Equipment
  - c. EQIP – Environmental Quality Incentive Program
  - d. CRP – Conservation Reserve Program
  - e. CSP – Conservation Security Program
  - f. Measurement/Evaluation
    - EQIP – 75% of allocation obligated
  - g. USDA programs assist in meeting all of the District's goals and objectives
5. Non-Point Source Cost Share Program
- a. Administration of cost share funds **GOAL: Cost Share Utilization % of over 90% of allocation.**
  - b. Partnership with NRCS
    - Technical Assistance
    - Equipment
  - c. Identification of priority practices **GOAL: For FY2027, Ranking Worksheet will be optimized to comply with DOC Programs Manual, 'Targeting & Prioritizing'**

- d. Identification of priority areas
  - e. Marketing program/Publicity
  - f. Objective #'s 1 – 4, 6 - 14
6. Equipment
- a. 1 No-till Drill and one 4-foot Drill - Available for rental
  - b. Root Plow - Available for rental
  - c. Objective #'s 2 - 4
7. Publicity of Programs
- a. Partnerships (Friends University, Great Plains Nature Center, Farm Bureau, Extension)
  - b. Brochures/pamphlets
  - c. Website
  - d. Facebook
  - e. Media Opportunities
    - 1. Television
    - 2. Radio
    - 3. Newspaper
  - f. Will assist in meeting all goals and objectives
8. Education and Information
- a. Party for the Planet at Sedgwick County Zoo
  - b. Special Events
  - c. Partnerships
  - d. Presentations to local service groups/business entities
  - e. School Presentations.
    - Demonstrations using models
  - f. Equipment
    - 1. Stream bank trailer

2. EnviroScape Model
  3. Will assist in meeting all goals and objectives
9. Conservation District Annual Meeting
- a. Public disclosure of operations, i.e., accountability
  - b. Publicity of programs
  - c. Education through guest speakers
  - d. Objective #'s 8, 11 - 15
10. Grants
- a. Research Grant Opportunities - The District will pursue grant opportunities.
  - b. Objective #'s 1-15.
11. Program Delivery
- a. All business consisting of demonstrations, finances, cooperation and output towards inner/outer agency personnel, clientele, and all others in the performance of official business will comply will NRCS Civil Rights policies and responsibilities.

## **Outreach and Education Goals**

### **Outreach and Education Strategy and Goals - Producer Outreach List of activities 1:**

Partnership with NRCS - The SCCD and NRCS will work in close partnership with each other. It is understood that equipment may be shared on an as needed basis upon the approval of both parties. A local operational agreement has been approved.

### **Outreach and Education Strategy and Goals - Producer Outreach List of activities 2:**

United States Department of Agriculture Programs NRCS will be responsible for the administration, publicity, and implementation of these programs. The SCCD will work in partnership with NRCS to assist in meeting their goals and objectives.

### **Outreach and Education Strategy and Goals - Producer Outreach List of activities 3:**

State Water Resource Cost Share Program and Non-Point Source Pollution Program. The District Manager is the administrator of these programs. Actions necessary for the implementation of this program are ongoing throughout the year

**Outreach and Education Strategy and Goals - Producer Outreach List of activities 4:**  
SCCD currently owns a root plow, 10-ft no-till grass drill, 4-ft grass drill, and stream bank trailer. This equipment is rented out at reasonable rates as a method of encouraging landowner participation in programs and installation of BMPs.

**Outreach and Education Strategy and Goals - Producer Outreach List of activities 5:**  
The Annual meeting will be February 17, 2026. The District Manager and Supervisors are responsible for this activity.

**Outreach and Education Strategy and Goals - General Public/Youth Education List of activities 1:**

Publicity of Programs All staff will participate in publicity activities. The District uses events such as Party for the Planet at the Sedgwick County Zoo and numerous other events to publicize the District and our programs.

**Outreach and Education Strategy and Goals - General Public/Youth Education List of activities 2:**

Education and Information The District Manager and Supervisors are responsible for activities. The District utilizes models in many of its presentations. Currently the District owns a stream bank trailer and an Enviroscape.

**Outreach and Education Strategy and Goals - General Public/Youth Education List of activities 3:**

Database - The District has concluded the best way to promote District Programs and effectively target funds is via an website, email, Facebook, and public presentation campaign.

**Outreach and Education Strategy and Goals - General Public/Youth Education List of activities 4:**

The Annual meeting will be February 17, 2026. The District Manager and Supervisors are responsible for this activity.

**Signature Statement**

The Sedgwick County Conservation District board of supervisors has reviewed the 2026 Annual Work Plan and was officially approved on September 9, 2025.

Attest: \_\_\_\_\_  
Chairperson